

NOVEMBER 2003

OWNER'S/ OPERATOR'S MANUAL

MODEL NO.'s

614H

624H

714H

724H

814H

824H

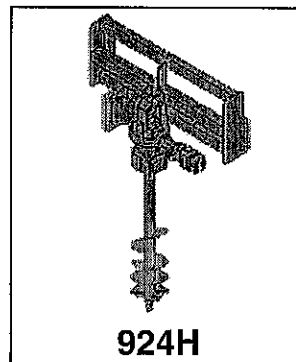
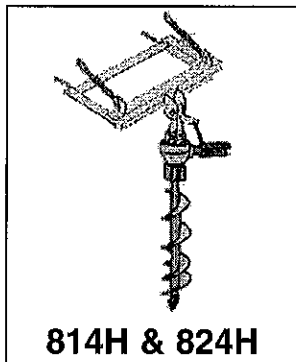
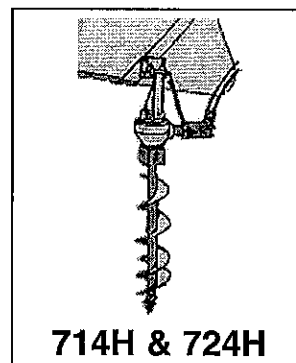
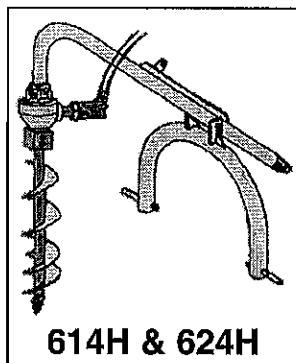
924H

(#030800001 AND UP)

⚠ CAUTION

For Safe Operation
Read Rules And
Instructions Carefully

SINO LEEINGLES, PIDA AYUDA
A AIGUIEN QUE SI LO LEA
PARA QUE LE TRADUZCA LAS
MEDIDAS DE SEGURIDAD.



HYDRAULIC POST HOLE DIGGERS

Safety Instructions
Tractor Preparation
Operating Instructions

Assembly & Mounting
Maintenance
Repair Parts

⚠ CAUTION ⚠

THE FOLLOWING SAFETY PRECAUTIONS SHOULD BE THOROUGHLY UNDERSTOOD
BEFORE ATTEMPTING TO BEGIN ASSEMBLING THIS MACHINE

1. Select an area for assembly that is clean and free of any debris which might cause persons working on the assembly to trip.
2. Do not lift heavy parts or assemblies. Use crane, jack, tackle, fork trucks or other mechanical devices.
3. Preview the assembly instructions in your operator's manual before proceeding further.
4. If the assembly instructions call for parts or assemblies to be blocked up, use only blocking material that is in good condition and is capable of handling the weight of the assembly to be blocked. Also insure that the blocking material is on a clean, dry surface.
5. Never put hands, or any part of body, under blocked up assemblies if at all possible.
6. After completing assembly, thoroughly inspect the machine to be sure that all nuts, bolts, hydraulic fittings or any other fastened assemblies have been thoroughly tightened.
7. Before operating the machine, thoroughly read the operation section of your operator's manual.
8. Before operating, read the maintenance section of your operator's manual to be sure that any parts requiring lubrication, such as gearboxes, are full, to avoid any possible damage.
9. **Before operating equipment** – If you have any questions regarding the proper assembly or operation, contact your dealer or representative.

AUGER TEETH MOUNTING PATTERNS



FIG.
B
6"

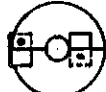


FIG.
C
9"

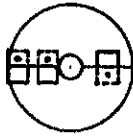


FIG.
D
12" & 14"

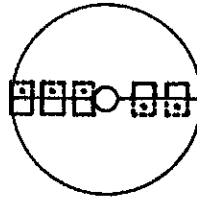


FIG.
E
18"

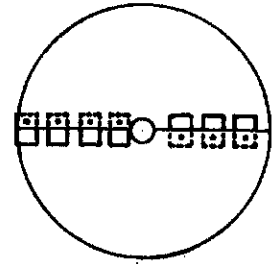
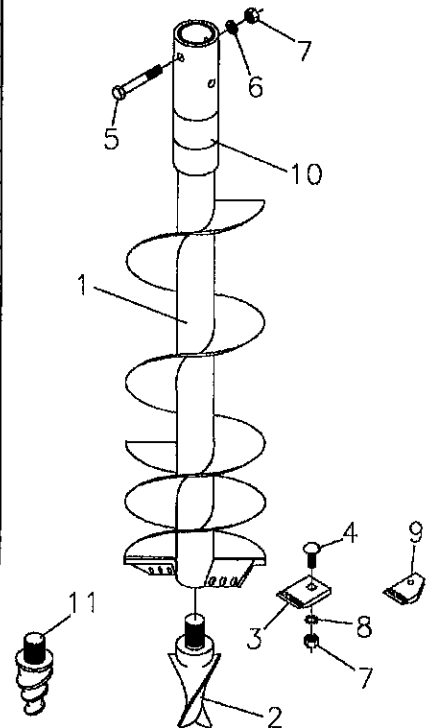


FIG.
F
24"

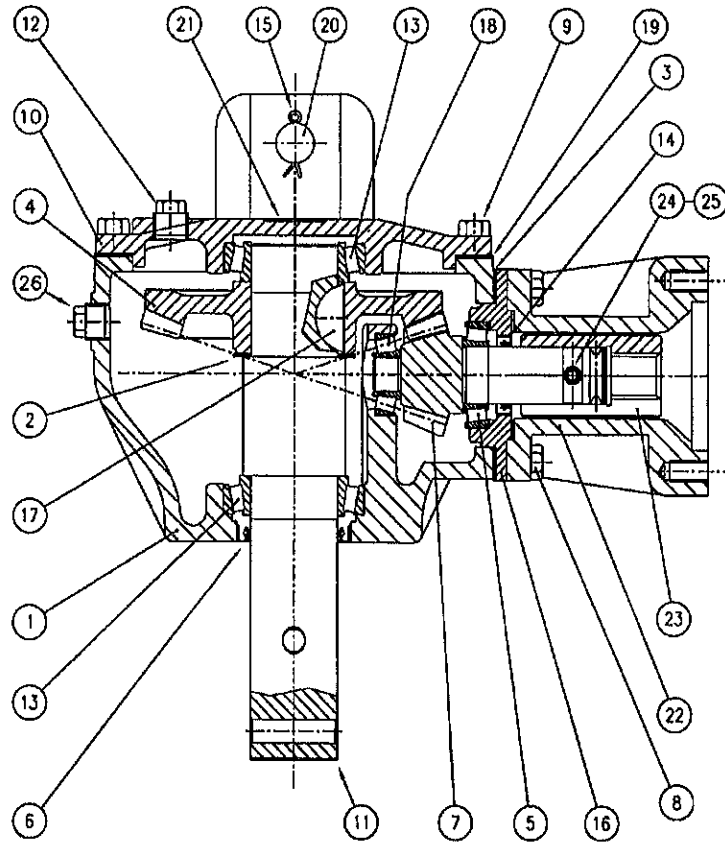
HEAVY DUTY AUGER PARTS LIST

| Ref. No. | Part No. | Description | No. Req'd. |
|----------|----------|---|------------|
| 1 | 706150 | 6" HD Single Flight Auger (Complete) | Opt. |
| | 706155 | 6" HD Double Flight Auger " | Opt. |
| | 706109 | 9" HD Single Flight Auger " | Opt. |
| | 706009 | 9" HD Double Flight Auger " | Opt. |
| | 706112 | 12" HD Single Flight Auger " | Opt. |
| | 706012 | 12" HD Double Flight Auger " | Opt. |
| | 706033 | 14" HD Single Flight Auger " | Opt. |
| | 706037 | 14" HD Double Flight Auger " | Opt. |
| | 706070 | 18" HD Double Flight Auger " | Opt. |
| | 706075 | 24" HD Double Flight Auger " | Opt. |
| 2 | 170802 | Fishtail Auger Point | 1 |
| 3 | 706021 | Red Claw Digger Tooth | Var. |
| 4 | 2503166 | Bolt 1/2"-13NC x 1 1/4" Carriage Head | Var. |
| 5 | 2503109 | Bolt 1/2"-13NC x 3 1/2" Hex Head | 2 |
| 6 | 2502002 | Washer 1/2" Springlock | 2 |
| 7 | 2500003 | Nut 1/2" Full Hex | Var. |
| 8 | 2502003 | 1/2" External Star Lockwasher | Var. |
| 9 | 171903* | Auger Cutting Edge (6" only) | 2 |
| N/S | 2503178* | Bolt 3/8"-16NC x 1 1/4" Carriage Head (6" only) | 2 |
| N/S | 2502014* | 3/8" External Star Washer (6" only) | 2 |
| N/S | 2500004* | Nut 3/8" Full Hex (6" only) | 2 |
| 10 | 101131 | Safety Sign - Danger (Guard Missing) | 1 |
| 11 | 210007 | Optional Screw Type Auger Point | 1 |

*Old Style 6" Augers (prior to June 2000) - New 6" Augers use Red Claw Digger Tooth (Item #3)



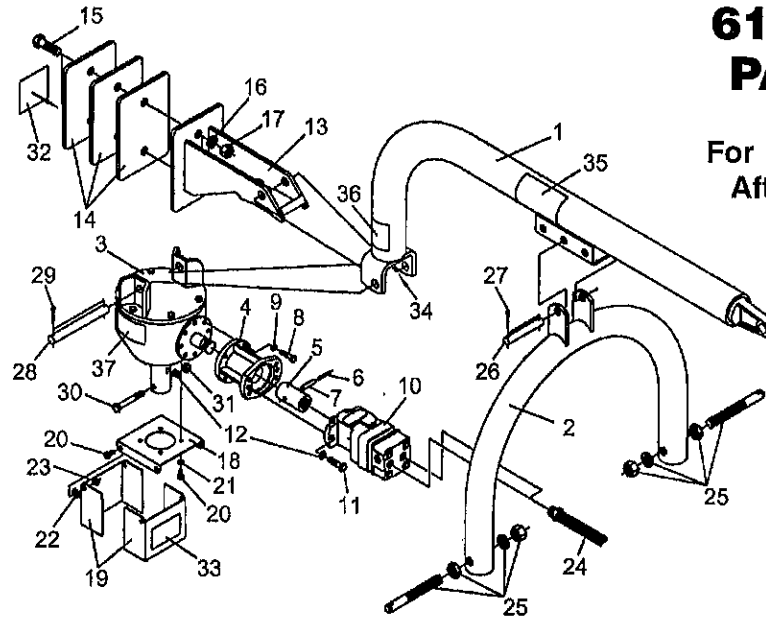
HYDRAULIC PHD GEARBOX PARTS LIST



| Ref. No. | Worksaver Part No. | Description | Com. Code No. | No. Req'd. |
|----------|--------------------|--|---------------|------------|
| | 706405 | Complete Gearbox Only (less Flange Assembly) | 9.196.000.00 | 1 |
| | 702141 | Flange Assembly (Items #8 & #22-#25) | A.196.502 | 1 |
| 1 | Not Available | Castling & Machining | 0.196.0300.00 | 1 |
| 2 | 706406 | Shim Kit (51.1 x 63) | 0.196.7500.00 | 1 |
| 3 | 706407 | Gasket Kit (81.5 x 118) | 0.196.7300.00 | 1 |
| 4 | 706408 | Crown Gear Z35 M5.08 | 0.196.6000.00 | 1 |
| 5 | 706409 | Roller Bearing LM67048 - LM67010 | 8.0.9.02531 | 1 |
| 6 | 706410 | Dust Lip 50.8 x 66.62 x 7.92 | 8.7.1.02529 | 1 |
| 7 | 706411 | Pinion Z11 M5.08 | 0.196.5000.00 | 1 |
| 8 | 702148 | Bolt M10 x 40 Hex Head Gr. 8.8 | 8.1.1.00745 | 4 |
| 9 | 702149 | Bolt M10 x 30 Hex Head Gr. 8.8 | 8.1.1.00073 | 6 |
| 10 | 702150 | Top Plate | 0.196.1300.00 | 1 |
| 11 | 706412 | Output Shaft | 0.196.3001.00 | 1 |
| 12 | 702147 | 1/2" Gas Solid Plug | 8.6.5.00203 | 1 |
| 13 | 706413 | Roller Bearing LM104949 - LM104911 | 8.0.9.02532 | 2 |
| 14 | 706414 | Dust Lip 31.75 x 44.5 x 7.92 | 8.7.1.02530 | 1 |
| 15 | 702153 | Cotter Pin 5 x 40 | 8.4.7.00671 | 2 |
| 16 | 706415 | Cover | 0.196.1301.00 | 1 |
| 17 | 706416 | Woodruff Key 7.94 x 16.28 | 0.196.7000.00 | 1 |
| 18 | 706417 | Roller Bearing LM11910 - LM11949 | 8.0.9.02533 | 1 |
| 19 | 706418 | Gasket Kit (190 x 224.5) | 0.196.7200.00 | 1 |
| 20 | 706419 | Pivot Shaft | 0.196.3000.00 | 1 |
| 21 | Not Available | Name Plate | 0.124.7135.00 | 1 |
| 22 | 702142 | Extension | 0.196.1302.00 | 1 |
| 23 | 702143 | Bushing Grooved | 0.196.7001.00 | 1 |
| 24 | 702144 | Pin 6 x 45 DIN1481 | 8.4.5.02705 | 1 |
| 25 | 702145 | Pin 10 x 45 DIN1481 | 8.4.5.02706 | 1 |
| 26 | 702146 | 3/8" Gas Solid Plug | 8.6.5.00006 | 1 |

614H & 624H PARTS LIST

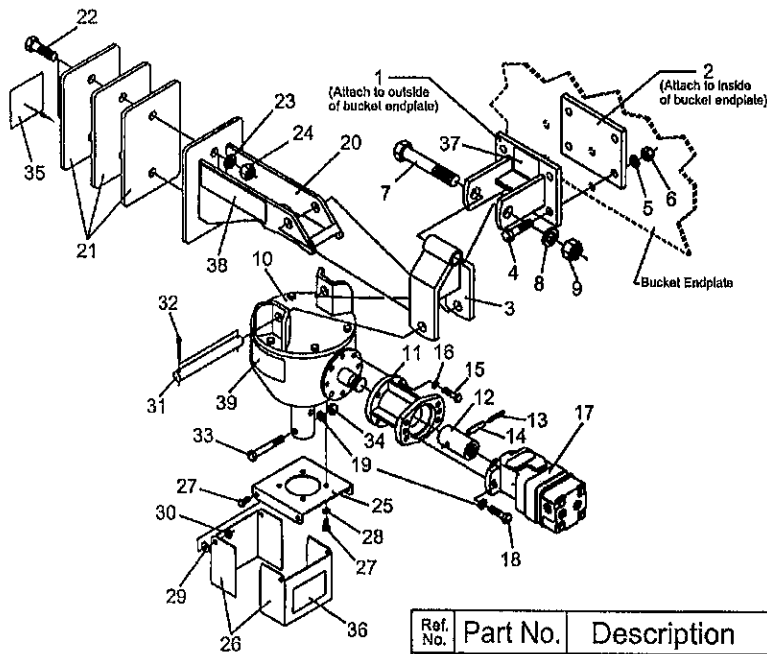
For Units Manufactured
After S/N 030800001



| Ref. No. | Part No. | Description | No. Req'd. |
|----------|----------|---|------------|
| 1 | 705001 | Boom Weldment, Heavy Duty | 1 |
| 2 | 3814007 | Yoke Weldment | 1 |
| 3 | 706405 | Gearbox | 1 |
| | 702141 | Flange Assembly (Includes Items #4 thru #8) | 1 |
| 4 | 702142 | Extension | 1 |
| 5 | 702143 | Bushing, Splined | 1 |
| 6 | 702144 | Pin 6 x 45, Spring | 1 |
| 7 | 702145 | Pin 10 x 45, Spring | 1 |
| 8 | 702148 | Bolt M10 x 40 Hex Head Gr. 8.8 | 4 |
| 9 | 2502019 | Washer 10MM Springlock | 4 |
| 10 | 2505615 | Hydraulic Motor (614H) | 1 |
| | 2505617 | Hydraulic Motor (624H) | 1 |
| 11 | 2503265 | Bolt 1/2"-13NC x 1 3/4" Hex Head Gr.5 | 2 |
| 12 | 2502002 | Washer 1/2" Springlock | 4 |
| 13 | 702056 | Counterweight Bracket | 1 |
| 14 | 702058 | Endplate, Counterweight | 3 |
| 15 | 2503085 | Bolt 3/4"-10NC x 2 1/2" Hex Head Gr.5 | 2 |
| 16 | 2502001 | Washer 3/4" Springlock | 2 |
| 17 | 2500002 | Nut 3/4"-10NC Full Hex | 2 |
| 18 | 708091 | Shield Base | 1 |
| 19 | 706094 | Flip Down Shield | 2 |
| 20 | 2503030 | Bolt 3/8"-16NC x 3/4" Hex Head Gr.2 | 8 |
| 21 | 2502008 | Washer 3/8" Springlock | 4 |
| 22 | 2501004 | Washer 3/8" Flat | 4 |
| 23 | 2500055 | Nut 3/8"-16NC Hex Stamplock | 4 |
| 24 | 2505576 | Hydraulic Hose 1/2" x 60" | 2 |
| 25 | 590071 | Hitch Pin (AK-479) | 2 |
| 26 | 3814019 | Boom Adjustment Pin | 1 |
| 27 | 2504121 | Cotter Pin 3/16" x 1 1/2" | 2 |
| 28 | 706096 | Gearbox Pin | 1 |
| 29 | 706097 | Cotter Pin 3/16" x 2" | 2 |
| 30 | 2503109 | Bolt 1/2"-13NC x 3 1/2" Hex Head Gr.2 | 2 |
| 31 | 2500003 | Nut 1/2"-13NC Full Hex | 2 |
| 32 | 101122 | Safety Sign-Warning (Hi Pressure) | 1 |
| 33 | 101186 | Safety Sign-Warning (Shields) | 2 |
| 34 | 101015 | Safety Sign-PHD Instructions | 1 |
| 35 | 101032 | Safety Sign-Danger (PH Digger) | 1 |
| 36 | 101130 | Safety Sign-Danger (Rotating Parts) | 1 |
| 37 | 101188 | Safety Sign-Gearbox Notice | 1 |

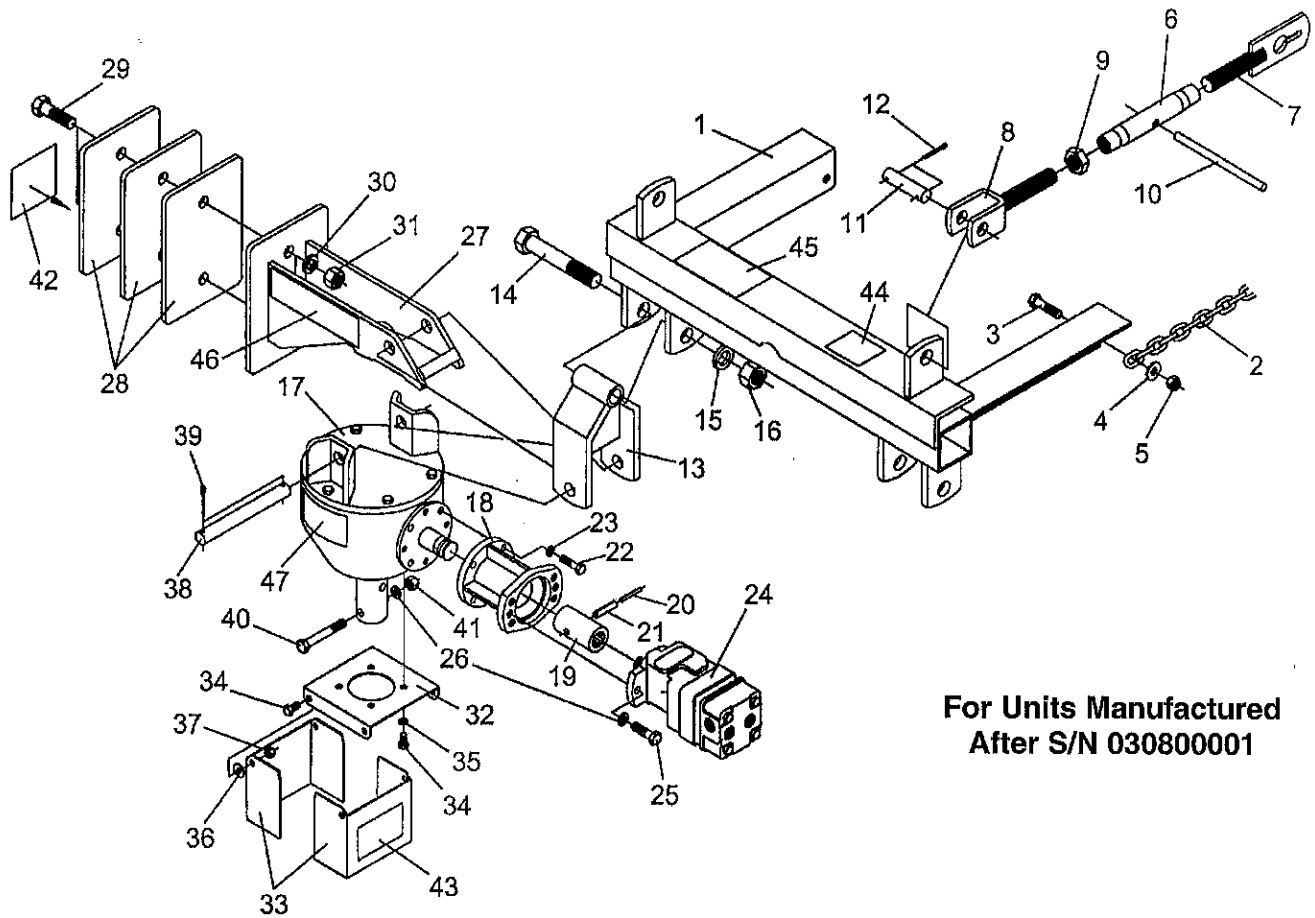
714H & 724H PARTS LIST

For Units Manufactured
After S/N 03080001



| Ref. No. | Part No. | Description | No. Req'd. |
|----------|----------|---|------------|
| 1 | 830316 | Mounting Bracket Weldment | 1 |
| 2 | 830210 | Mounting Plate | 1 |
| 3 | 702040 | Pivot Bracket Weldment | 1 |
| 4 | 2503088 | Bolt 5/8"-11NC x 2 1/2" Hex Head Gr.5 | 4 |
| 5 | 2502007 | Washer 5/8" Springlock | 4 |
| 6 | 2500013 | Nut 5/8"-11NC Full Hex | 4 |
| 7 | 2503257 | Bolt 1"-8NC x 6" Hex Head Gr.5 | 1 |
| 8 | 2502009 | Washer 1" Springlock | 1 |
| 9 | 2500001 | Nut 1"-8NC Full Hex | 1 |
| 10 | 706405 | Gearbox | 1 |
| | 702141 | Flange Assembly (Includes Items #11 thru #15) | 1 |
| 11 | 702142 | Extension | 1 |
| 12 | 702143 | Bushing, Splined | 1 |
| 13 | 702144 | Pin 6 x 45, Spring | 1 |
| 14 | 702145 | Pin 10 x 45, Spring | 1 |
| 15 | 702148 | Bolt M10 x 40 Hex Head Gr. 8.8 | 4 |
| 18 | 2502019 | Washer 10MM Springlock | 4 |
| 17 | 2505615 | Hydraulic Motor (714H) | 1 |
| | 2505617 | Hydraulic Motor (724H) | 1 |
| 18 | 2503265 | Bolt 1/2"-13NC x 1 3/4" Hex Head Gr.5 | 2 |
| 19 | 2502002 | Washer 1/2" Springlock | 4 |
| 20 | 702056 | Counterweight Bracket | 1 |
| 21 | 702058 | Endplate, Counterweight | 3 |
| 22 | 2503085 | Bolt 3/4"-10NC x 2 1/2" Hex Head Gr.5 | 2 |
| 23 | 2502001 | Washer 3/4" Springlock | 2 |
| 24 | 2500002 | Nut 3/4"-10NC Full Hex | 2 |
| 25 | 706091 | Shield Base | 1 |
| 26 | 706094 | Flip Down Shield | 2 |
| 27 | 2503030 | Bolt 3/8"-16NC x 3/4" Hex Head Gr.2 | 8 |
| 28 | 2502008 | Washer 3/8" Springlock | 4 |
| 29 | 2501004 | Washer 3/8" Flat | 4 |
| 30 | 2500055 | Nut 3/8"-16NC Hex Stamplock | 4 |
| 31 | 706096 | Gearbox Pin | 1 |
| 32 | 706097 | Cotter Pin 3/16" x 2" | 2 |
| 33 | 2503109 | Bolt 1/2"-13NC x 3 1/2" Hex Head Gr.2 | 2 |
| 34 | 2500003 | Nut 1/2"-13NC Full Hex | 2 |
| 35 | 101122 | Safety Sign-Warning (HI Pressure) | 1 |
| 36 | 101186 | Safety Sign-Warning (Shields) | 2 |
| 37 | 101015 | Safety Sign-PHD Instructions | 1 |
| 38 | 101130 | Safety Sign-Danger (Rotating Parts) | 1 |
| 39 | 101188 | Safety Sign-Gearbox Notice | 1 |

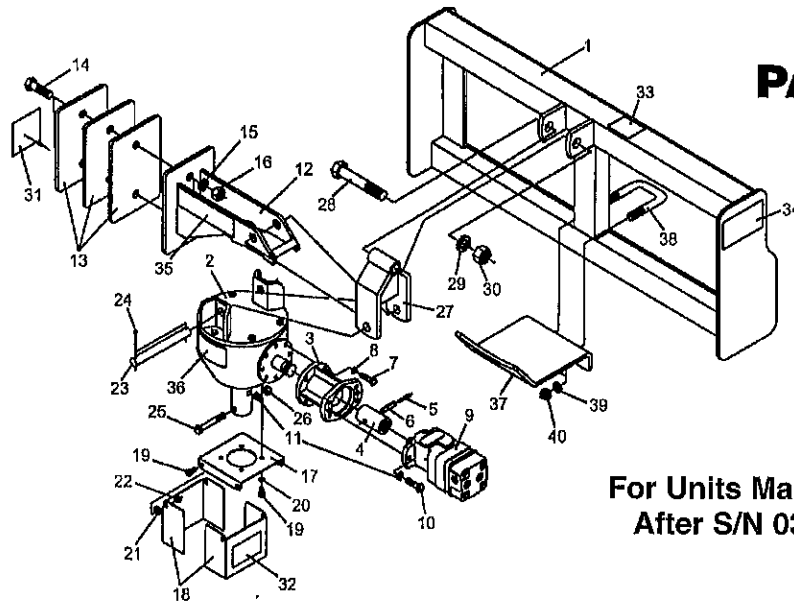
814H & 824H PARTS LIST



For Units Manufactured
After S/N 030800001

| Ref. No. | Part No. | Description | No. Req'd. | Ref. No. | Part No. | Description | No. Req'd. |
|----------|----------|---|------------|----------|----------|---------------------------------------|------------|
| 1 | 702001 | Clamp-On Weldment | 1 | 24 | 2505615 | Hydraulic Motor (814H) | 1 |
| 2 | 830406 | Chain, 5/16" Proof Coll x 5 Ft. | 2 | 25 | 2505617 | Hydraulic Motor (824H) | 1 |
| 3 | 2503118 | Bolt 1/2"-13NC x 2" Hex Head Gr.5 | 2 | 26 | 2503265 | Bolt 1/2"-13NC x 1 3/4" Hex Head Gr.5 | 2 |
| 4 | 2501003 | Washer 1/2" Flat | 2 | 27 | 2502002 | Washer 1/2" Springlock | 4 |
| 5 | 2500039 | Nut 1/2"-13NC Hex Nylock | 2 | 28 | 702056 | Counterweight Bracket | 1 |
| | 831215 | Complete Turnbuckle Assembly (#6 thru #10) | 2 | 29 | 702058 | Endplate, Counterweight | 3 |
| 6 | 590277 | Barrel | 2 | 30 | 2503085 | Bolt 3/4"-10NC x 2 1/2" Hex Head Gr.5 | 2 |
| 7 | 830412 | Threaded Stub, LH | 2 | 31 | 2502001 | Washer 3/4" Springlock | 2 |
| 8 | 830410 | Threaded Stub, RH | 2 | 32 | 2500002 | Nut 3/4"-10NC Full Hex | 2 |
| 9 | 2500024 | Nut 1"-8NC Jam Hex | 2 | 33 | 706091 | Shield Base | 1 |
| 10 | 590145 | Handle | 2 | 34 | 706094 | Flip Down Shield | 2 |
| 11 | 831229 | Pin, Turnbuckle | 2 | 35 | 2503030 | Bolt 3/8"-16NC x 3/4" Hex Head Gr.2 | 8 |
| 12 | 2504121 | Cotter Pin 3/16" x 1 1/2" | 4 | 36 | 2502008 | Washer 3/8" Springlock | 4 |
| 13 | 702040 | Pivot Bracket Weldment | 1 | 37 | 2501004 | Washer 3/8" Flat | 4 |
| 14 | 2503257 | Bolt 1"-8NC x 6" Hex Head | 1 | 38 | 2500055 | Nut 3/8"-16NC Hex Stamplock | 4 |
| 15 | 2502009 | Washer 1" Springlock | 1 | 39 | 706096 | Gearbox Pin | 1 |
| 16 | 2500001 | Nut 1"-8NC Full Hex | 1 | 40 | 706097 | Cotter Pin 3/16" x 2" | 2 |
| 17 | 706405 | Gearbox | 1 | 41 | 2503109 | Bolt 1/2"-13NC x 3 1/2" Hex Head Gr.2 | 2 |
| | 702141 | Flange Assembly (Includes Items #18 thru #22) | 1 | 42 | 2500003 | Nut 1/2"-13NC Full Hex | 2 |
| 18 | 702142 | Extension | 1 | 43 | 101122 | Safety Sign-Warning (HI Pressure) | 1 |
| 19 | 702143 | Bushing, Splined | 1 | 44 | 101186 | Safety Sign-Warning (Shields) | 2 |
| 20 | 702144 | Pin 6 x 45, Spring | 1 | 45 | 101015 | Safety Sign-PHD Instructions | 1 |
| 21 | 702145 | Pin 10 x 45, Spring | 1 | 46 | 101032 | Safety Sign-Danger (PH Digger) | 1 |
| 22 | 702148 | Bolt M10 x 40 Hex Head Gr. 8.8 | 4 | 47 | 101130 | Safety Sign-Danger (Rotating Parts) | 1 |
| 23 | 2502019 | Washer 10MM Springlock | 4 | | 101188 | Safety Sign-Gearbox Notice | 1 |

924H PARTS LIST



For Units Manufactured
After S/N 030800001

| Ref. No. | Part No. | Description | No. Req'd. |
|----------|----------|---|------------|
| 1 | 702121 | Main Frame Weldment | 1 |
| 2 | 706405 | Gearbox | 1 |
| | 702141 | Flange Assembly (Includes Items #3 thru #7) | 1 |
| 3 | 702142 | Extension | 1 |
| 4 | 702143 | Bushing, Splined | 1 |
| 5 | 702144 | Pin 6 x 45, Spring | 1 |
| 6 | 702145 | Pin 10 x 45, Spring | 1 |
| 7 | 702148 | Bolt M10 x 40 Hex Head Gr. 8.8 | 4 |
| 8 | 2502019 | Washer 10MM Springlock | 4 |
| 9 | 2505617 | Hydraulic Motor | 1 |
| 10 | 2503265 | Bolt 1/2"-13NC x 1 3/4" Hex Head Gr.5 | 2 |
| 11 | 2502002 | Washer 1/2" Springlock | 4 |
| 12 | 702056 | Counterweight Bracket | 1 |
| 13 | 702058 | Endplate, Counterweight | 3 |
| 14 | 2503085 | Bolt 3/4"-10NC x 2 1/2" Hex Head Gr.5 | 2 |
| 15 | 2502001 | Washer 3/4" Springlock | 2 |
| 16 | 2500002 | Nut 3/4"-10NC Full Hex | 2 |
| 17 | 706091 | Shield Base | 1 |
| 18 | 706094 | Flip Down Shield | 2 |
| 19 | 2503030 | Bolt 3/8"-16NC x 3/4" Hex Head Gr.2 | 8 |
| 20 | 2502008 | Washer 3/8" Springlock | 4 |
| 21 | 2501004 | Washer 3/8" Flat | 4 |
| 22 | 2500055 | Nut 3/8"-16NC Hex Stamplock | 4 |
| 23 | 706096 | Gearbox Pin | 1 |
| 24 | 706097 | Cotter Pin 3/16" x 2" | 1 |
| 25 | 2503109 | Bolt 1/2"-13NC x 3 1/2" Hex Head Gr.2 | 2 |
| 26 | 2500003 | Nut 1/2"-13NC Full Hex | 2 |
| 27 | 702040 | Pivot Bracket Weldment | 1 |
| 28 | 2503257 | Bolt 1"-8NC x 6" Hex Head Gr.5 | 1 |
| 29 | 2502009 | Washer 1" Springlock | 1 |
| 30 | 2500001 | Nut 1"-8NC Full Hex | 1 |
| 31 | 101122 | Safety Sign-Warning (Hi Pressure) | 1 |
| 32 | 101186 | Safety Sign-Warning (Shields) | 2 |
| 33 | 101015 | Safety Sign-PHD Instructions | 1 |
| 34 | 101032 | Safety Sign-Danger (PH Digger) | 1 |
| 35 | 101130 | Safety Sign-Danger (Rotating Parts) | 1 |
| 36 | 101188 | Safety Sign-Gearbox Notice | 1 |
| 37 | 702127 | Gearbox Cradle | 1 |
| 38 | 940009 | U-Bolt 5/8"-11NC 3" ID x 4" | 1 |
| 39 | 2502007 | Washer 5/8" Spring Lock | 2 |
| 40 | 2500013 | Nut 5/8"-11NC Full Hex | 2 |

▲ SAFETY PRECAUTIONS ▲

**MOST ACCIDENTS OCCUR BECAUSE OF NEGLIGENCE OR CARELESSNESS.
AVOID NEEDLESS ACCIDENTS BY FOLLOWING ALL OF THE SAFETY PRECAUTIONS LISTED BELOW.**

- Machinery should be operated only by those who are responsible and are authorized to do so.
- Stop the engine, lower all equipment, lock the brakes, and remove the ignition key before dismounting from the tractor.
- Never stand between tractor and implement while tractor is being backed to hitch.
- Loose fitting clothing should not be worn, to avoid catching on various parts.
- Detach implement in area where children normally do not play.
- When performing adjustments or maintenance on an implement, first lower it to the ground or block it securely at a workable height.
- Only a qualified operator should be permitted on tractor when in operation; no riders allowed.
- Make certain everyone is in the clear before starting tractor or raising or lowering equipment.
- Operate the tractor and implement only while seated in the driver's seat.
- Reduce speed when transporting mounted implements to avoid bouncing and momentary loss of steering control.
- A heavy load can cause instability of the tractor. Use extreme care during road travel. Slow down on turns and watch out for bumps. Tractor may need front counterweights to counter-balance the weight of the implement.
- Reduce speed on hillsides or curves so there is no danger of tipping.
- Avoid driving too close to the edge of ditches or creeks.
- Do not transport implement on public roads without reflectors and slow moving vehicle emblem in daylight and with approved warning lights at night and other periods of poor visibility.
- Due to the width of some implements, use extra caution on highways, farm roads, and when approaching gates.
- Always be sure the implement is in the proper position for transport.
- Keep alert and watch the front as well as the rear when working with the implement.

OWNER'S/ OPERATOR'S MANUAL

MODEL NO.'s

614H

624H

714H

724H

814H

824H

924H

(#030800001 AND UP)

NOVEMBER 2003

HYDRAULIC POST HOLE DIGGERS

**WHEN ORDERING REPAIR PARTS,
ALWAYS GIVE THE
FOLLOWING INFORMATION:**

1. PART NUMBER
2. PART DESCRIPTION
3. MODEL NUMBER
4. NAME OF ITEM

**MAKE EVERY DAY
A HOLIDAY
FROM ACCIDENTS!**

WORKSAVER, INC.

P.O. BOX 100 LITCHFIELD, IL 62056-0100 (217) 324-5973
WEB: <http://www.worksaver.com> E-MAIL: sales@worksaver.com